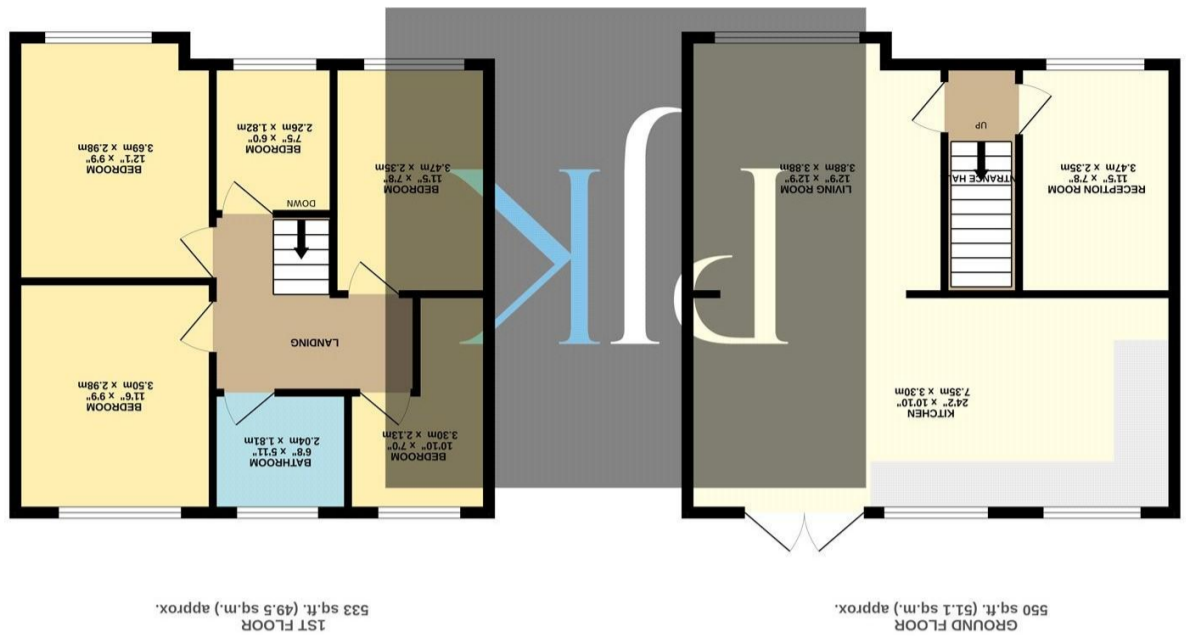




These particulars, whilst believed to be accurate are set out as a general outline only for guidance and do not constitute any part of an offer or contract. Intending purchasers should not rely on them as statements of representation of fact, but must satisfy themselves by inspection or otherwise as to their accuracy. No person in this firm's employment has the authority to make or give any representation or warranty in respect of the property.

What every attempt has been made to ensure the accuracy of the floorplan contained here, measurements of doors, windows, rooms and any other items are approximate and no responsibility is taken for any error or mis-statement. This plan is for illustrative purposes only and should be used as such by any prospective purchaser. The services, systems and appliances shown have not been tested and no guarantee as to their operability or efficiency can be given.  
 Made with Metropix 5/2025







## ASKING PRICE £425,000

An impressive extended five-bedroom semi-detached family home in immaculate walk-in condition, offering the perfect blend of modern living and classic charm. Situated in the highly desirable Heaton Chapel area, this beautifully modernized home boasts stylish décor, stunning kitchen and bathroom suites, and a versatile layout ideal for a growing family. Conveniently located near well-regarded schools, Heaton Chapel train station, and a variety of local amenities, this home provides a perfect setting for contemporary lifestyles.

Upon entering, the welcoming entrance hallway leads to the heart of the home. The charming living room, featuring elegant hardwood flooring and a cozy log burner, creates a warm and inviting atmosphere. To the rear, the spacious open-plan kitchen and dining area is designed for both entertaining and family life. The kitchen is equipped with stylish matching wall and base units, quality work surfaces, and ample space for both integrated and freestanding appliances, making it a culinary delight.

The first floor offers five well-proportioned bedrooms, including three comfortable doubles and two versatile single rooms, ideal for home offices or playrooms. These rooms are serviced by a modern and attractive three-piece family bathroom, featuring a bath with shower over, a hand wash basin, and a low-level WC.

Externally, the property boasts a block-paved double driveway at the front, providing off-road parking for multiple vehicles. To the rear, a beautifully paved garden with mature borders offers a private and peaceful outdoor space, perfect for relaxation or entertaining during the summer months.

1083 gross sq ft  
Tax Band: B  
Freehold

## "Stunning Extended Five-Bedroom Semi-Detached Family Home in Heaton Chapel"

