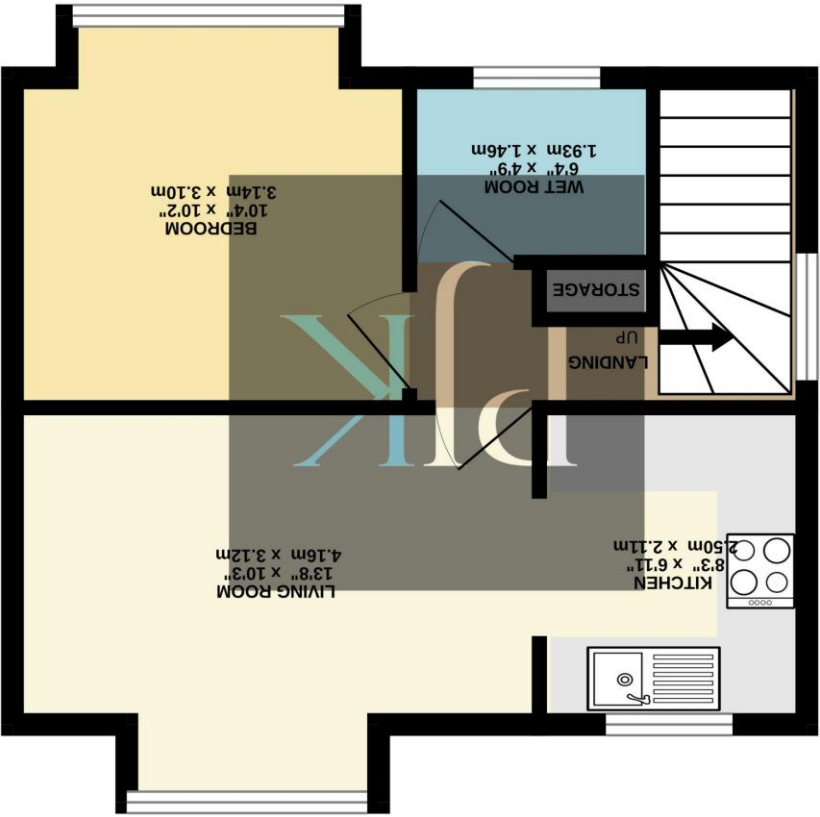
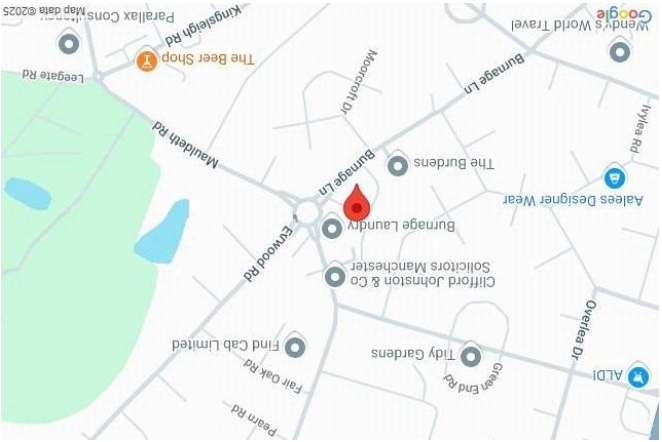
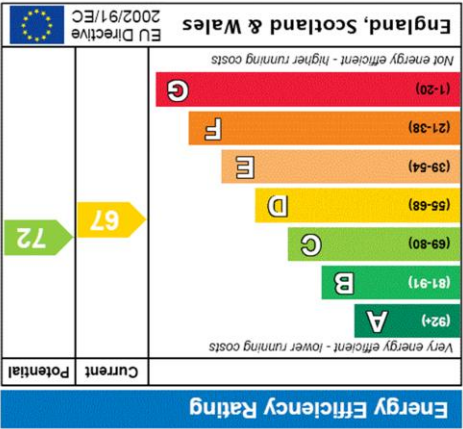


These particulars, whilst believed to be accurate are set out as a general outline only for guidance and do not constitute any part of an offer or contract. Intending purchasers should not rely on them as statements of representation of fact, but must satisfy themselves by inspection or otherwise as to their accuracy. No person in this firm's employment has the authority to make or give any representation or warranty in respect of the property.

While every attempt has been made to ensure the accuracy of the floorplan contained here, measurements of doors, windows, rooms and any items are approximate and no responsibility is taken by any prospective purchaser. The services, systems and appliances shown have not been tested and no guarantee as to their operability or efficiency can be given. Made with Metropix ©2025



FIRST FLOOR
527 sq.ft. (49.0 sq.m.) approx.



679-681 Wilmslow Road, Didsbury, Manchester, M20 6RA

0161 448 1234 | didsbury@philipjames.co.uk

www.philipjames.co.uk



PHILIP JAMES
KENNEDY

494 BURNAGE LANE
BURNAGE, M19 1LD



OFFERS OVER £70,000

A well-presented, 70% SHARED OWNERSHIP, one bedroom MODERN MAISONETTE for the OVER 60'S, with attractive resident's shared gardens, located within striking distance of situated within striking distance of Didsbury and Heaton Moor. NO ONWARD CHAIN. 527 Sq.Ft

The property reveals a vestibule area with stairs rising to the living accommodation, revealing a hallway with useful storage.

There is a bright and spacious living room, enjoying views over the shared gardens. An opening from the living room leads through to the stylish kitchen, fitted with an ample range of contemporary units, with space for appliances.

There is a generous bay fronted bedroom with ample space for both fitted or free standing furniture.

The property is served by a modern wet room.

Externally, the property benefits from off road parking and manicured shared gardens, for all residents to enjoy.

Leasehold/99 Years From September 2006
Service Charge/ £213.64 pcm
Ground Rent/ Included Within Service Charge
Council Tax Band: B
Approx. 527 Sq.Ft

*"70% Shared Ownership
Maisonette For Over 60's"*

