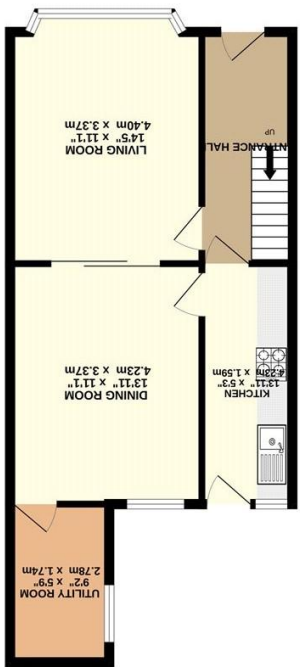


These particulars, whilst believed to be accurate are set out as a general outline only for guidance and do not constitute any part of an offer or contract. Intending purchasers should not rely on them as statements of representation of fact, but must satisfy themselves by inspection or otherwise as to their accuracy. No person in this firm's employment has the authority to make or give any representation or warranty in respect of the property.

Whilst every attempt has been made to ensure the accuracy of the floorplan contained here, measurements of doors, windows, rooms and any other items are approximate and no responsibility is taken for any error, omission or mis-statement. This plan is for illustrative purposes only and should be used as such by any prospective purchaser. The services, systems and appliances shown have not been tested and no guarantee as to their operability or efficiency can be given.  
Made with Metropix 5/2025

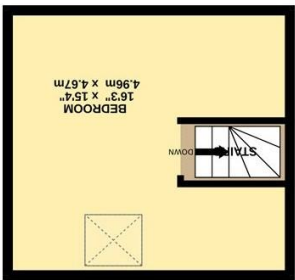
TOTAL FLOOR AREA : 1180 sq.ft. (109.6 sq.m.) approx.



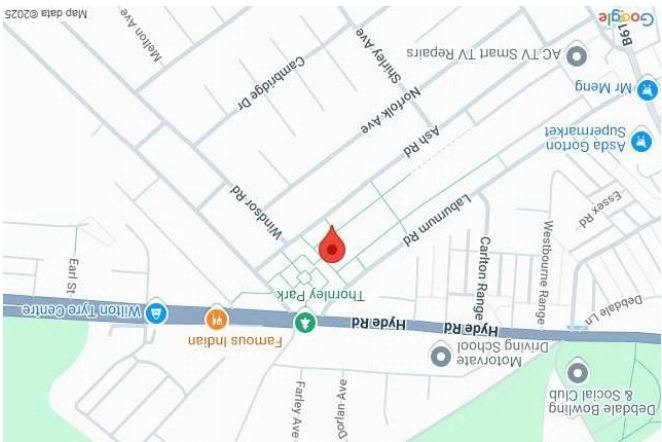
GROUND FLOOR  
505 sq.ft. (46.9 sq.m.) approx.



1ST FLOOR  
425 sq.ft. (39.5 sq.m.) approx.



2ND FLOOR  
249 sq.ft. (23.2 sq.m.) approx.



PHILIP JAMES  
KENNEDY

218 Heaton Moor Road, Stockport, Greater Manchester, SK4  
0161 431 5556 | [heatonmoor@philipjames.co.uk](mailto:heatonmoor@philipjames.co.uk)  
[www.philipjames.co.uk](http://www.philipjames.co.uk)



PHILIP JAMES  
KENNEDY

173 ASH ROAD  
DENTON, TAMESIDE, M34 2NJ





# ASKING PRICE £260,000

This beautifully presented and deceptively spacious four-bedroom end terrace home spans three floors and offers an impressive 1,180 square feet of living space. Perfectly positioned within easy reach of local amenities, reputable schools, and excellent transport links, this home provides an ideal blend of comfort, space, and convenience.

The welcoming entrance hallway leads to two generously sized reception rooms: a large bay-fronted living room filled with natural light and a spacious dining room, perfect for family gatherings or entertaining. The well-equipped kitchen features matching wall and base units with ample work surfaces, while an adjacent utility room offers space for white goods and includes a handy WC.

Upstairs, the first floor reveals three well-presented bedrooms, including two impressive doubles with floor-to-ceiling wardrobes and a comfortable single bedroom. These are serviced by a three-piece family bathroom. The top floor boasts an additional double bedroom with a stylish Velux window, creating a bright and versatile space.

Externally, the property features a split garden layout, including a low-maintenance courtyard with a brick-built storage area and a beautifully maintained rear garden mostly laid to lawn. A detached garage, accessible via a shared pathway, provides valuable off-road parking.

1180 gross sq ft  
Tax Band: A  
Freehold

## "Spacious Four-Bedroom End Terrace with Generous Gardens and Garage"

