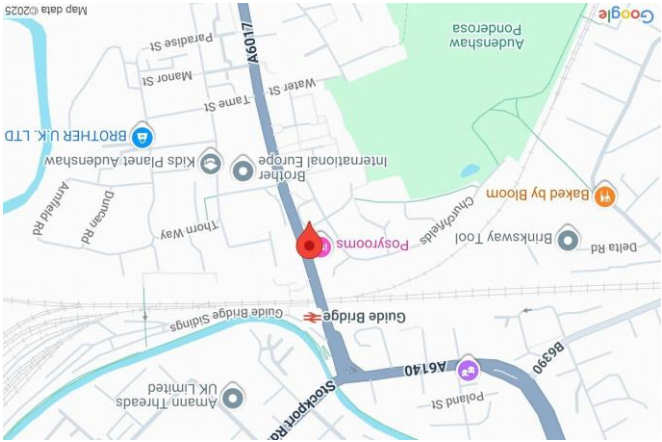
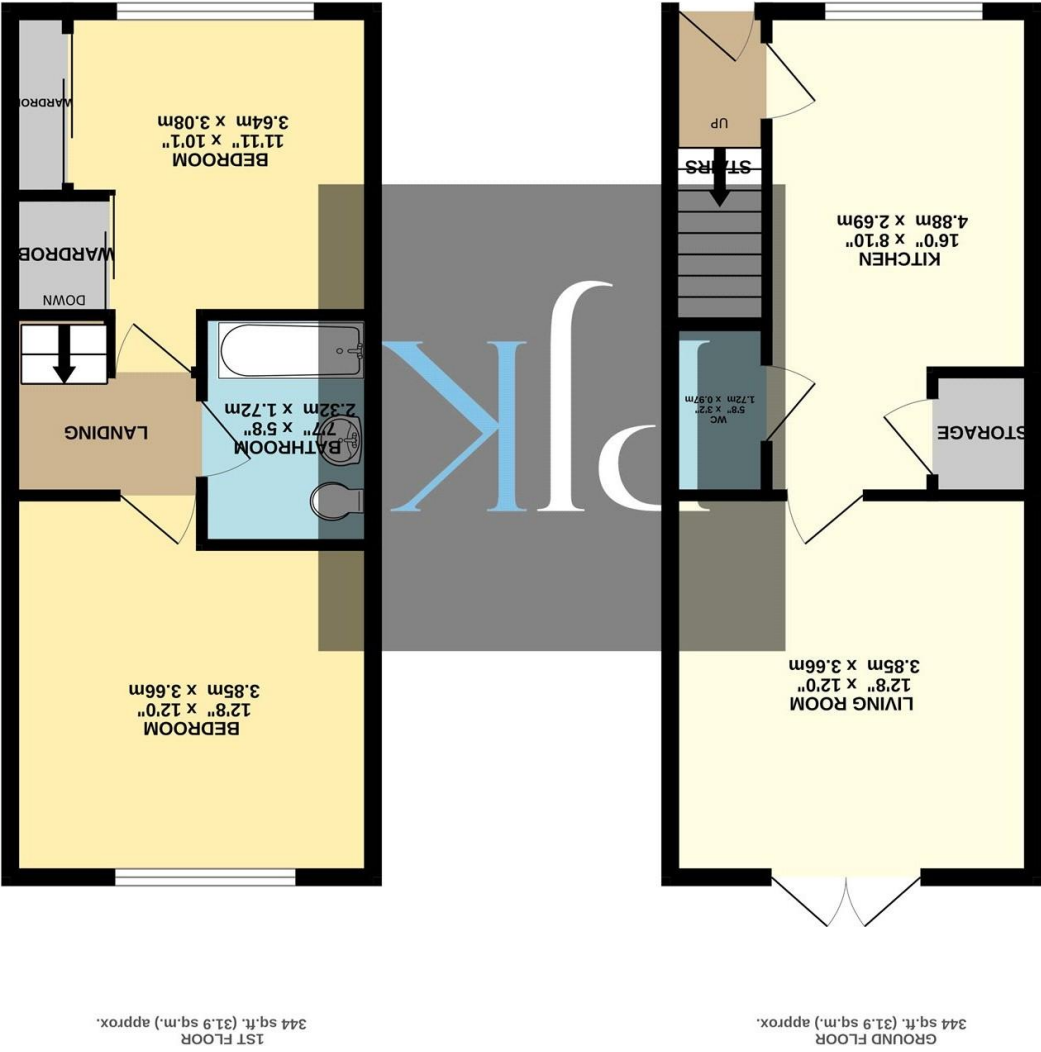


These particulars, whilst believed to be accurate are set out as a general outline only for guidance and do not constitute any part of an offer or contract. Intending purchasers should not rely on them as statements of representation of fact, but must satisfy themselves by inspection or otherwise as to their accuracy. No person in this firm's employment has the authority to make or give any representation or warranty in respect of the property.

Whilst every attempt has been made to ensure the accuracy of the floorplan contained here, measurements of doors, windows, rooms and any other items are approximate and no responsibility is taken for any error, omission or mis-statement. This plan is for illustrative purposes only and should be used as such by any prospective purchaser. The services, systems and appliances shown have not been tested and no guarantee as to their operability or efficiency can be given.
Made with Mapbox 5/2025



PJK

218 Heaton Moor Road, Stockport, Greater Manchester, SK4 0161 431 5556 | heatonmoor@philipjames.co.uk www.philipjames.co.uk



PHILIP JAMES
KENNEDY

4 WHITEHEAD STREET
AUDENSHAW, TAMESIDE, M34 5HH



OFFERS OVER £210,000

Ideally located just moments from Guide Bridge train station, this excellent property enjoys easy access to shops, well-regarded schools, and superb transport links, making it a convenient choice for modern living.

The property opens with a welcoming entrance hallway, leading into a stylish kitchen/diner. Finished to a high standard, the kitchen boasts a range of modern units, ample storage, a breakfast bar, and the added benefit of a downstairs WC. To the rear, the bright and spacious living room is flooded with natural light via patio doors, which open out onto the rear garden.

The first floor reveals two generous double bedrooms, both with space for king-sized beds, alongside a sleek family bathroom complete with a contemporary three-piece suite.

Externally, the home offers off-road parking to the front, while the rear garden combines decking and lawn, creating an attractive, low-maintenance space for relaxing or entertaining.

With its move-in-ready condition and prime Audenshaw location, this property is sure to appeal to a wide range of buyers.

687 gross sq ft
Tax Band: B
Leasehold

*"Stylish modern home in
prime Audenshaw
location"*

