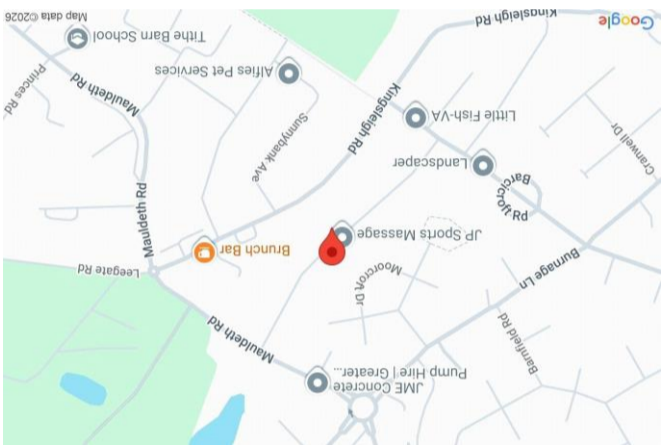
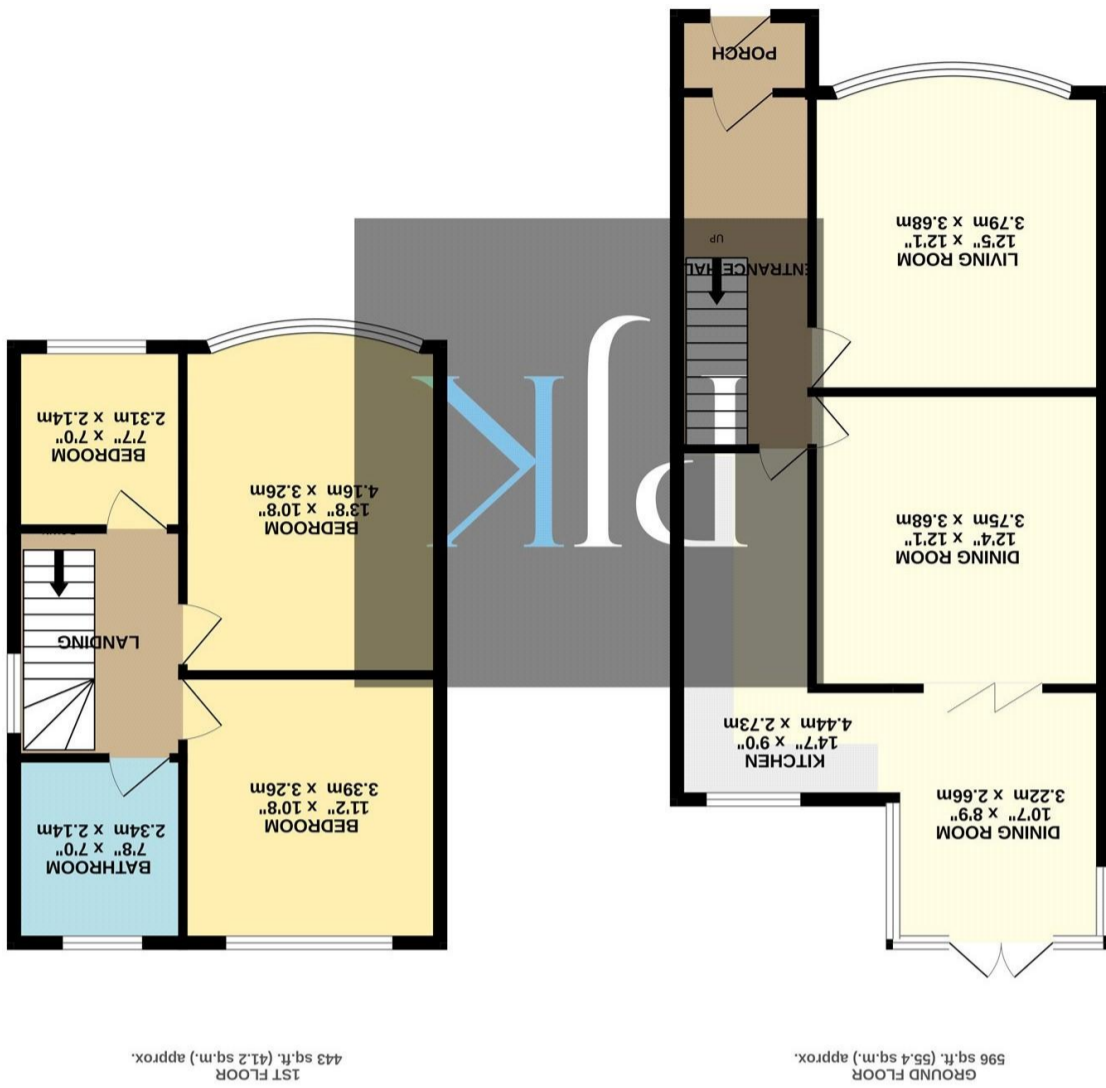


www.philipjames.co.uk  
 0161 431 5556 | heatonmoor@philipjames.co.uk  
 218 Heaton Moor Road, Heaton Moor, SK4 4DU

These particulars, whilst believed to be accurate are set out as a general outline only for guidance and do not constitute any part of an offer or contract. Intending purchasers should not rely on them as statements of representation of fact, but must satisfy themselves by inspection or otherwise as to their accuracy. No person in this firm's employment has the authority to make or give any representation or warranty in respect of the property.

What every attempt has been made to ensure the accuracy of the floorplan contained here, measurements of doors, windows, rooms and any other items are approximate and no responsibility is taken for any error, omission or mis-statement. The plan is illustrative purposes only and should be used as such by any prospective purchaser. The services, systems and appliances shown have not been tested and no guarantee as to their operability or efficiency can be given. Made with Metropix 5/2026



PHILIP JAMES  
 KENNEDY

22 WHITEHURST ROAD  
 HEATON MERSEY, STOCKPORT, SK4 3NZ



## OFFERS OVER £425,000

A well-presented three-bedroom semi-detached family home, occupying an impressive plot with beautiful front and rear gardens, off-road parking and a detached garden office. Offered in true walk-in condition, this excellent home is perfectly suited to growing families.

The accommodation begins with a welcoming entrance hallway housing the stairs to the first floor. To the front of the property is a bright bay-fronted living room, creating a warm and inviting reception space. To the rear is a second reception room, enhanced by bi-fold doors opening into the kitchen/dining area, creating a superb open-plan feel ideal for modern family living.

The kitchen is fitted with a range of stylish matching wall and base units, quality work surfaces and integrated appliances, while the adjoining dining area provides ample space for free-standing furniture and enjoys pleasant views over the rear garden.

To the first floor are three well-proportioned bedrooms, including two generous doubles and a good-sized single room. These rooms are served by a modern three-piece family bathroom suite.

Externally, the property benefits from a front garden and driveway, providing off-road parking and access to a detached garage. To the rear is a beautifully landscaped two-tiered garden, featuring a stone-paved patio area ideal for outdoor dining, with steps leading up to a well-maintained lawn. Completing the external offering is a detached home office, perfect for remote working or additional versatile space.

1039 gross sq ft  
Tax Band: C  
Freehold

## "Immaculate Three Bedroom Semi-Detached Home with Garden Office & Impressive Plot"

