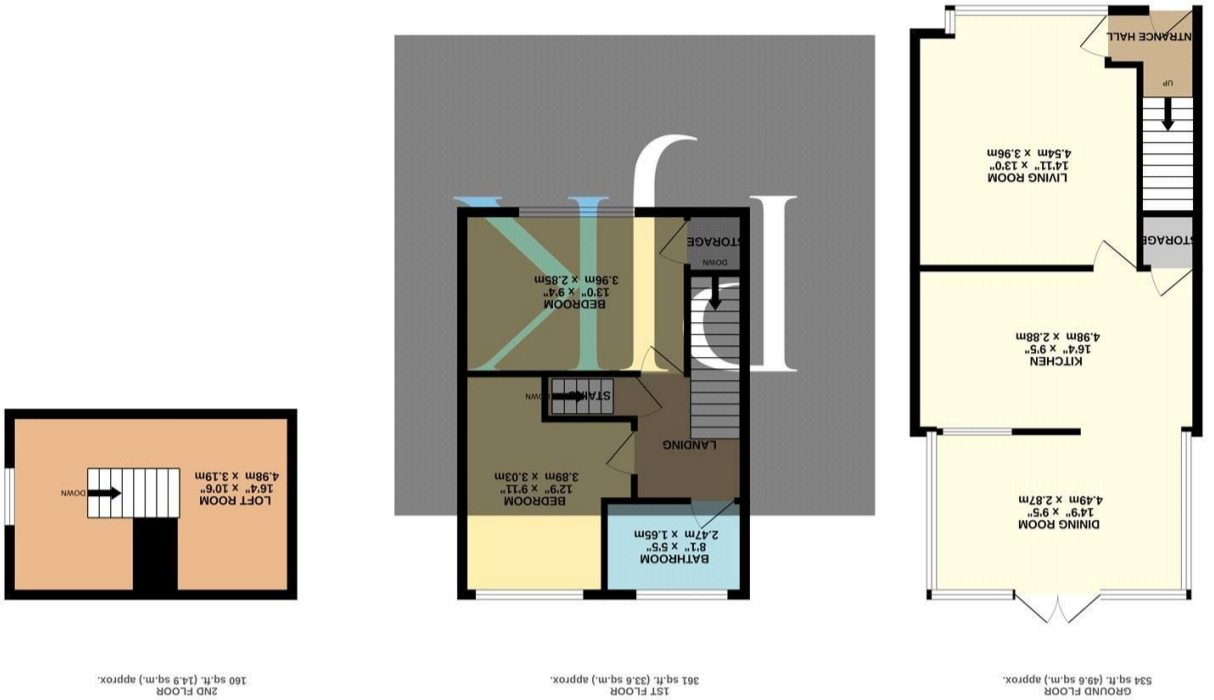


These particulars, whilst believed to be accurate are set out as a general outline only for guidance and do not constitute any part of an offer or contract. Intending purchasers should not rely on them as statements of representation of fact, but must satisfy themselves by inspection or otherwise as to their accuracy. No person in this firm's employment has the authority to make or give any representation or warranty in respect of the property.

Whilst every attempt has been made to ensure the accuracy of the floorplans contained here, measurements of doors, windows, rooms and any other items are approximate and no responsibility is taken for any omission or mis-statement. This plan is for illustrative purposes only and should be used as such by any prospective purchaser. The services, systems and appliances shown have not been tested and no guarantee as to their operability or efficiency can be given.
 Made with Metropix 5/2026





ASKING PRICE £220,000

A beautifully presented two-bedroom mid-terrace home, offered in true walk-in condition and representing an ideal first-time purchase. Having been renovated throughout with a stylish kitchen and modern bathroom suite, this attractive property offers high-quality accommodation ready to move straight into.

The accommodation begins with a welcoming entrance hallway housing the stairs to the first floor. To the front of the property is a cosy living room, benefitting from an attractive feature fireplace and excellent natural light. To the rear is a stylish open-plan kitchen diner, fitted with a range of matching wall and base units, quality work surfaces and ample space for freestanding white goods, alongside a dedicated dining area ideal for entertaining.

To the first floor are two well-proportioned double bedrooms, both offering excellent flexibility for a range of uses. These rooms are served by a modern three-piece family bathroom suite.

Completing the internal accommodation is a versatile loft room, providing additional space ideal for a home office, hobby room or occasional guest use.

Externally, the property benefits from a driveway to the front providing off-road parking for multiple vehicles. To the rear is a stunning landscaped garden, featuring a stylish decking area ideal for outdoor dining and enjoying the warmer months.

This superb home offers a fantastic opportunity for buyers seeking a high-quality, ready-to-move-into property.

1055 gross sq ft
Tax Band: A
Freehold

"Beautifully renovated two-bedroom mid-terrace with loft room, driveway and landscaped garden."

