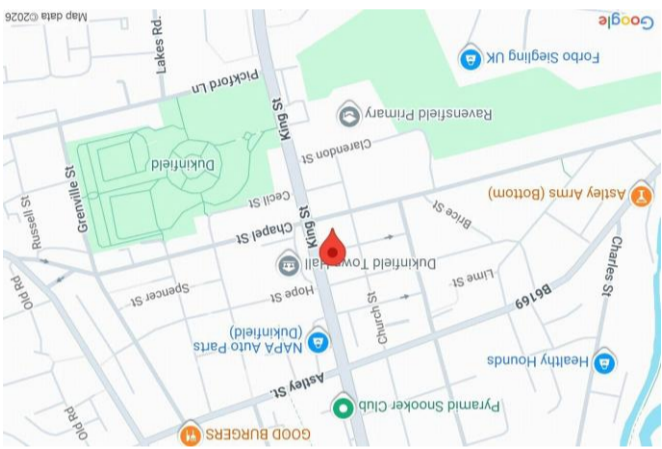


PHILIP JAMES KENNEDY

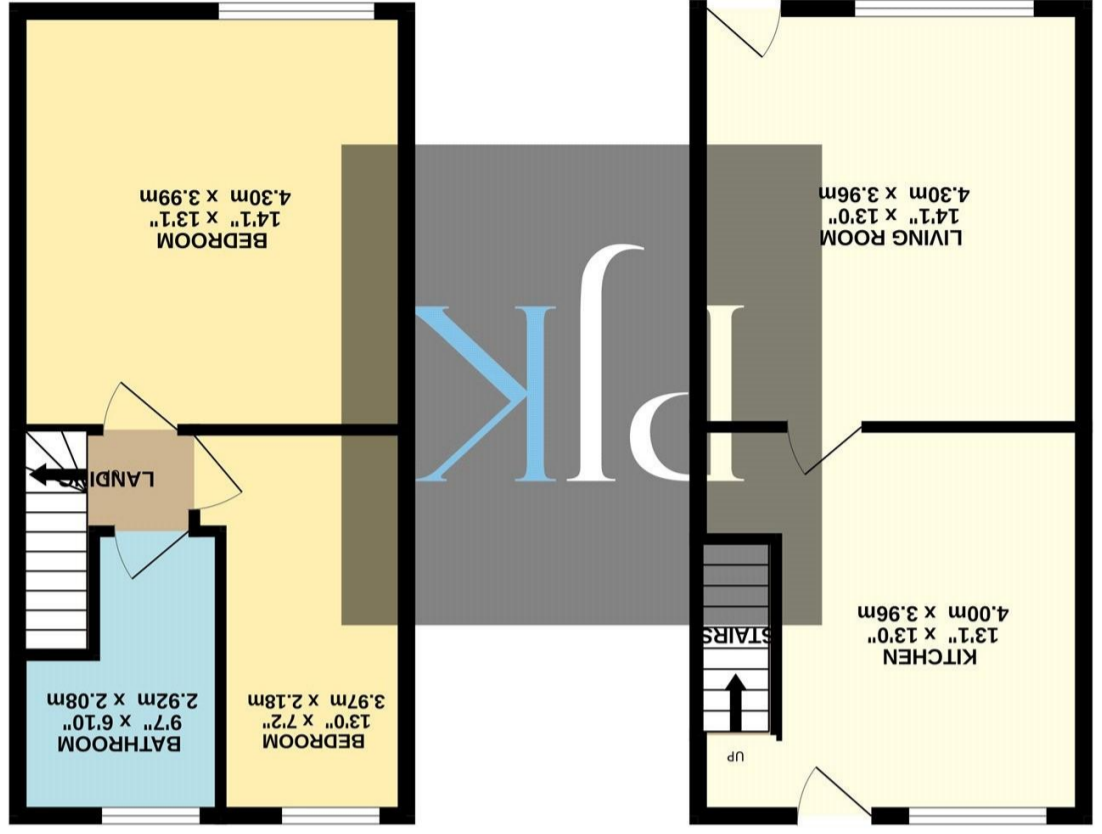
218 Heaton Moor Road, Stockport, Greater Manchester, SK4
 0161 431 5556 | heatonmoor@philipjames.co.uk
 www.philipjames.co.uk

Score	Energy rating	Current	Potential
92+	A		
81-91	B		
69-80	C		
55-68	D		
39-54	E		
21-38	F	38 F	
1-20	G		86 B



These particulars, whilst believed to be accurate are set out as a general outline only for guidance and do not constitute any part of an offer or contract. Intending purchasers should not rely on them as statements of representation of fact, but must satisfy themselves by inspection or otherwise as to their accuracy. No person in this firm's employment has the authority to make or give any representation or warranty in respect of the property.

Whist every attempt has been made to ensure the accuracy of the floorplan contained here, measurements of doors, windows, rooms and other items are approximate and no responsibility is taken for any error or mis-statement. This plan is illustrative purposes only and should be used as such by any prospective purchaser. The services, systems and appliances shown have not been tested and no guarantee as to their operability or efficiency can be given.
 Made with Metropix 5/2026



FIRST FLOOR (33.0 sq.m.) approx. 356 sq.ft.

GROUND FLOOR (32.9 sq.m.) approx. 354 sq.ft.



PHILIP JAMES
KENNEDY

83 CHAPEL STREET
 DUKINFIELD, GREATER MANCHESTER, SK16 4QJ



ASKING PRICE £165,000

A beautifully presented two-bedroom mid-terrace property, finished to an excellent standard throughout and offering stylish accommodation ideal for first-time buyers, downsizers and buy-to-let investors alike. Situated within easy reach of Dukinfield Town Centre, excellent commuter links and a range of local amenities, this attractive home is ready to move straight into.

The accommodation begins with a welcoming entrance and opens into a bright and spacious living room positioned to the front of the property, creating a warm and inviting reception space finished to a high standard.

To the rear is a stunning kitchen/diner, fitted with a range of modern matching wall and base units, quality work surfaces and ample space for both free-standing white goods and dining furniture, creating a superb space for everyday living and entertaining.

To the first floor are two excellent bedrooms, making the property ideal for first-time buyers, downsizers or those requiring additional guest or office space. These rooms are then serviced by a beautiful modern family bathroom suite, finished to an excellent standard.

Externally, the property benefits from a private enclosed rear yard, creating a low-maintenance outdoor space ideal for enjoying the warmer months.

709 gross sq ft
Tax Band: A
Freehold

"Stylish two-bedroom terrace with stunning kitchen & bathroom suites."

