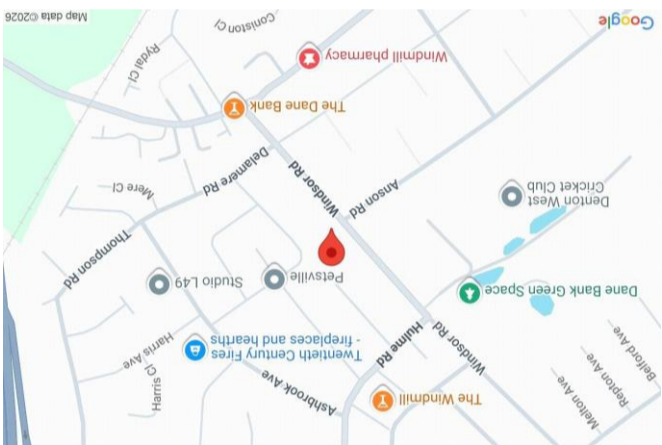
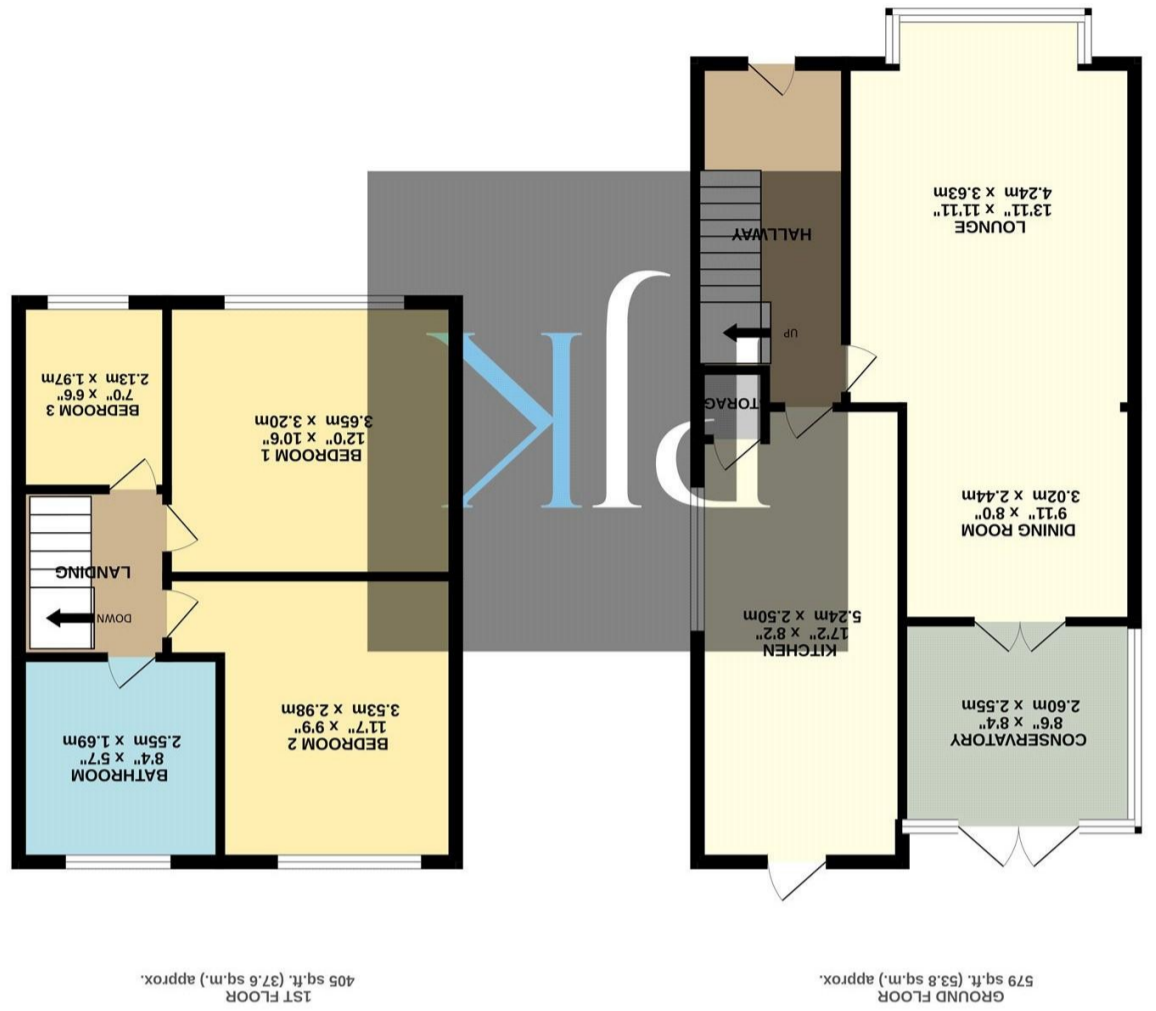


www.philipjames.co.uk
 0161 431 5556 | heatonmoor@philipjames.co.uk
 218 Heaton Moor Road, Stockport, Greater Manchester, SK4

These particulars, whilst believed to be accurate are set out as a general outline only for guidance and do not constitute any part of an offer or contract. Intending purchasers should not rely on them as statements of representation of fact, but must satisfy themselves by inspection or otherwise as to their accuracy. No person in this firm's employment has the authority to make or give any representation or warranty in respect of the property.

What every attempt has been made to ensure the accuracy of the floorplan contained here, measurements of doors, windows, rooms and other items are approximate and no responsibility is taken for any error of dimension or mis-statement. The plan is for illustrative purposes only and should be used as such by any prospective purchaser. The services, systems and appliances shown have not been tested and no guarantee as to their operability or efficiency can be given.
 Made with Metropix 5/2026



PHILIP JAMES
 KENNEDY

137 WINDSOR ROAD
 DENTON, TAMESIDE, M34 2HH



ASKING PRICE £325,000

A beautifully presented three-bedroom semi-detached family home occupying an impressive plot with off-road parking and a beautifully landscaped rear garden. Offering approximately 984 sq ft of well-proportioned accommodation, this excellent property is perfectly suited to growing families and buyers looking for a home ready to move straight into.

The accommodation begins with a welcoming entrance hallway, housing the stairs to the first-floor accommodation. To the front of the property is a bright and spacious living room, which opens seamlessly into a dining area creating an excellent open-plan living space ideal for modern family life and entertaining. The dining area offers ample space for free-standing furniture and can easily be tailored to suit the needs and desires of potential buyers.

To the rear is a delightful conservatory, providing an additional reception area and a lovely aspect over the rear garden. Completing the ground floor is an extended kitchen, fitted with a range of matching wall and base units, quality work surfaces and ample space for freestanding appliances.

The first floor reveals three well-proportioned bedrooms, including two excellent double bedrooms and a further single room, ideal as a nursery, home office or guest bedroom. These rooms are serviced by a three-piece family bathroom suite.

Externally, the property continues to impress with off-road parking, while to the rear is a beautifully landscaped garden complemented by a stone-paved patio area, creating an excellent space for outdoor dining and enjoying the warmer months.

984 gross sq ft
Tax Band: C
Freehold

"Beautifully Presented Three Bedroom Semi- Detached Family Home with Stunning Rear Garden"

