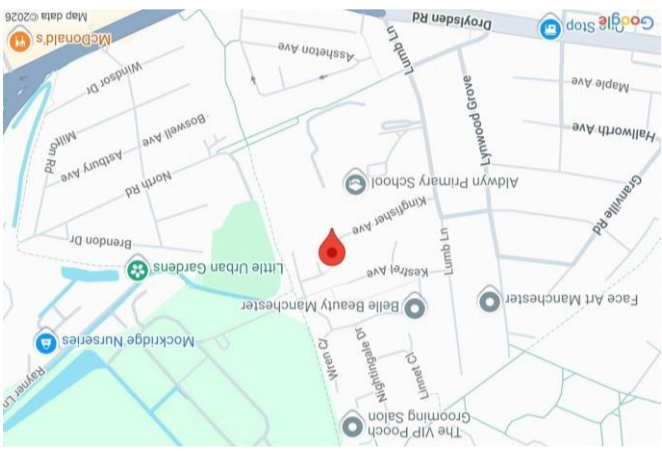
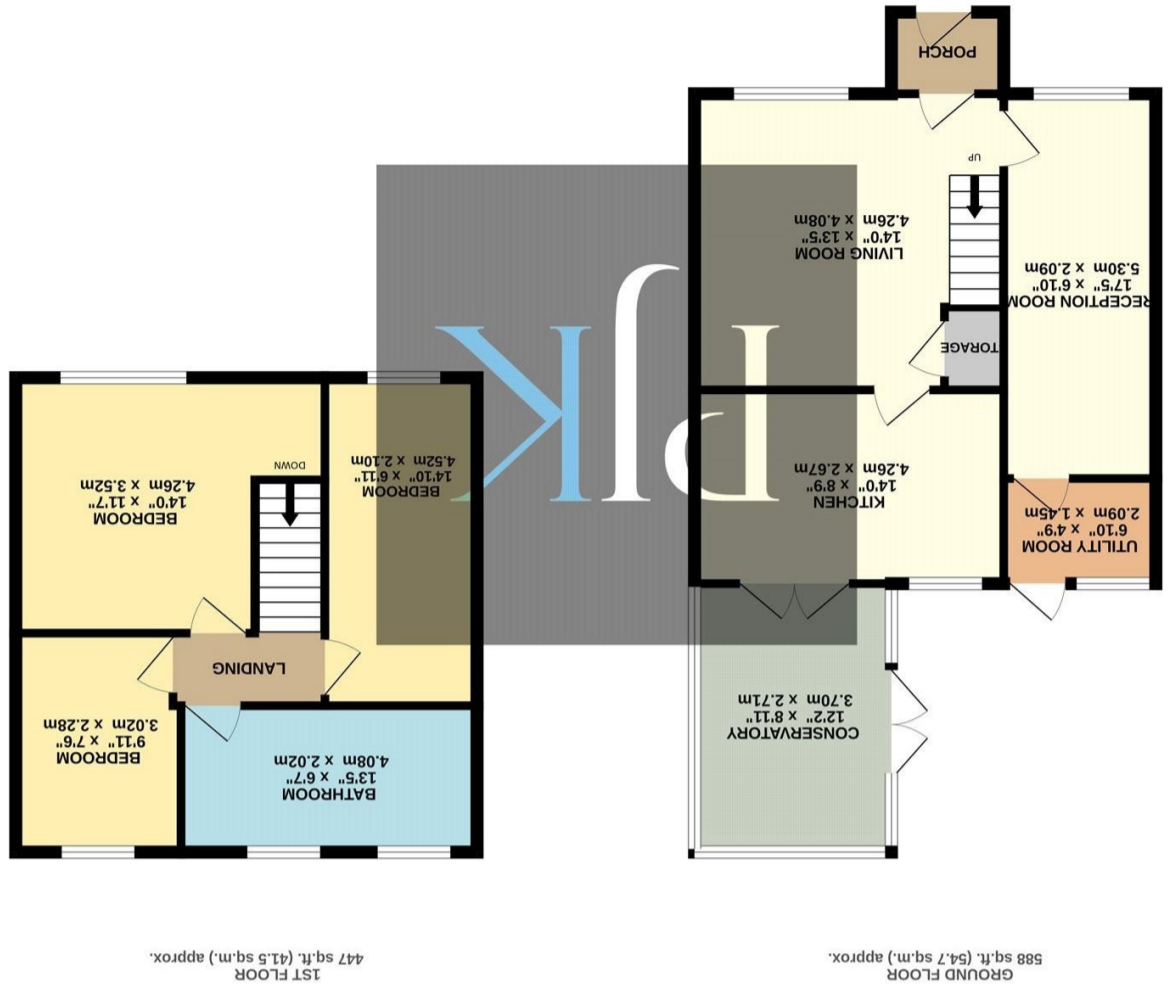


www.philipjames.co.uk  
 0161 431 5556 | heatonmoor@philipjames.co.uk  
 218 Heaton Moor Road, Stockport, Greater Manchester, SK4

These particulars, whilst believed to be accurate are set out as a general outline only for guidance and do not constitute any part of an offer or contract. Intending purchasers should not rely on them as statements of representation of fact, but must satisfy themselves by inspection or otherwise as to their accuracy. No person in this firm's employment has the authority to make or give any representation or warranty in respect of the property.

Whilst every attempt has been made to ensure the accuracy of the floorplan contained here, measurements of doors, windows, rooms and any other items are approximate and no responsibility is taken for any error or mis-statement. This plan is illustrative purposes only and should be used as such by any prospective purchaser. The services, systems and appliances shown have not been tested and no guarantee as to their operability or efficiency can be given.  
 Made with Metropix 5/2026





## ASKING PRICE £325,000

An impressive extended three-bedroom family home offered to the market with no onward vendor chain. Reaching approximately 1,036 sq ft, this excellent property offers a high standard of presentation throughout with attractive kitchen and bathroom suites, creating an ideal opportunity for buyers looking for a home ready to move straight into.

The accommodation begins with a welcoming entrance porch, leading into a spacious hallway housing the stairs to the first-floor accommodation. To the front of the property is a bright and generously sized living room, creating a comfortable everyday living space. A particular feature of the home is the additional extended reception room, offering excellent flexibility and ideal for use as a second sitting room, playroom or home office.

To the rear is a beautifully presented kitchen, fitted with a range of matching wall and base units, quality work surfaces and ample space for appliances. Opening from the kitchen is a delightful conservatory, providing additional living space and a pleasant outlook over the rear garden. Completing the ground floor is a useful utility room, adding practicality and additional storage.

The first floor reveals three well-proportioned bedrooms double bedrooms. These rooms are then serviced by an impressive family bathroom suite.

Externally, the property offers an excellent opportunity for families and buyers alike, combining spacious accommodation with versatile living space throughout.

1036 gross sq ft  
Tax Band: C  
Freehold

*"Impressive Extended  
Three Bedroom Family  
Home – No Onward  
Chain"*

